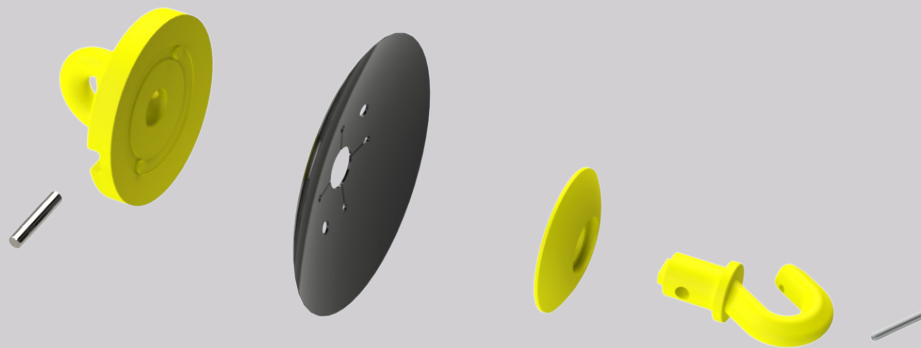


# CL2 Disc Change Procedure

## Operating Instruction Manual



**Revision A- October 2017**

### **Australia**

PO Box 100  
Booleroo Centre SA 5482  
Australia

Phone: + 61 8 8667 2253

Fax: + 61 8 8667 2250

Email: [office@kellyengineering.com.au](mailto:office@kellyengineering.com.au)

Website (Australia): [www.kellyengineering.com.au](http://www.kellyengineering.com.au)

### **United States**

526 1st Street  
PO Box 121  
New Glarus 53574  
United States

Phone: 608-527-2386

Email: [sales@kellyharrows.com](mailto:sales@kellyharrows.com)

Website (US): [www.kellyharrows.com](http://www.kellyharrows.com)

# Thank you for choosing a Kelly Engineering product

We trust that you find the following manual clear and easy to follow. If you should require additional customer support or assistance, please do not hesitate to contact us.

Spare parts can be purchased, as required, through your local dealer or by contacting Kelly Engineering Australia or in the United States, Hood & Company.

Kelly Engineering welcomes feedback. Should you have any difficulties that you wish to raise, suggestions for improvement or modifications that you feel would enhance our products we look forward to hearing from you.

## **Australia**

### **Kelly Engineering**

**PO Box 100**

**Booleroo Centre SA 5482**

**Phone:** + 61 8 8667 2253

**Fax:** + 61 8 8667 2250

**Email:** [sales@kellyengineering.com.au](mailto:sales@kellyengineering.com.au)

**Spare Parts:** [parts@kellyengineering.com.au](mailto:parts@kellyengineering.com.au)

**Website:** [www.kellyengineering.com.au](http://www.kellyengineering.com.au)

## **United States**

### **Kelly Engineering**

**526 1st Street**

**PO Box 121**

**New Glarus WI 53574**

**Phone:** 608 527 2386

**Mobile:** 316 304 6178

**Email:** [waynerosenbaum@kellyharrows.com](mailto:waynerosenbaum@kellyharrows.com)

**Website:** [www.kellyharrows.com](http://www.kellyharrows.com)

## **Spare Parts**

### **Hood & Company Inc**

**Springfield MO**

**Phone:** 417 865 2100

**Fax:** 417 865 2105

**Email:** [hoodco@hoodco.com](mailto:hoodco@hoodco.com)

# Contents

	Page no
Section 1: Procedure	4
Section 2: Notes	9

# Section 1

## Procedure

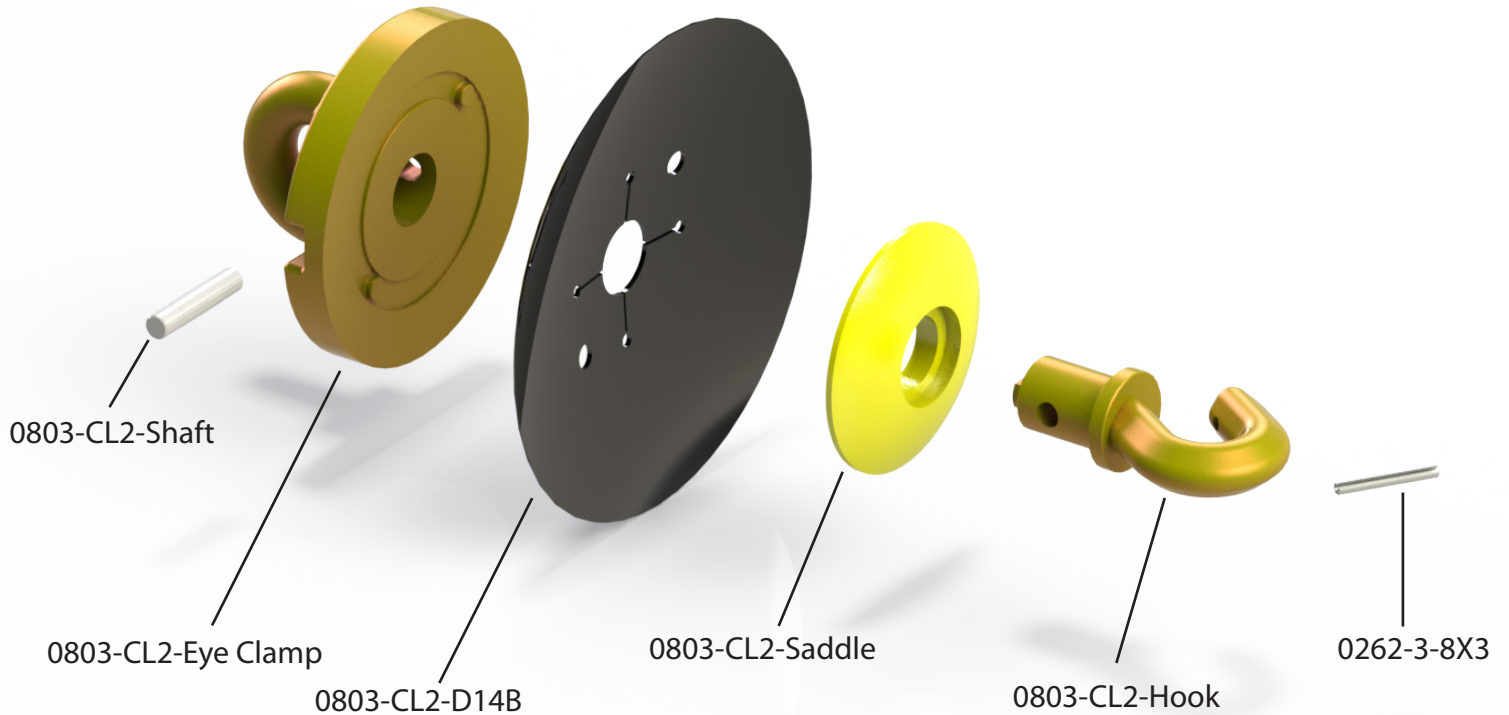
## CL2 Disc Change Procedure

This document describes a procedure for the safe changeover of CL2 discs.

**NOTE:** Each disc weighs 22kg (48lb). Appropriate care must be taken during manual handling.

# Figure 1: Exploded View of CL2 Disc Assembly

Figure 1: Exploded view of CL2 disc assembly



## Changeover procedure as follows:

1. Locate press jig in press (see Figure 2 for orientation).
2. Load disc into press with Hook facing upwards - ensure that Eye Clamp and Hook are secured within the jig with pins supplied.
3. Close press, applying force to Saddle (see Figure 3). DO NOT exceed pressure of 9 Tonne (19,800lb).
4. With the clamping force applied, push or tap the shaft with a hammer & drift, and remove from the CL2 Disc assembly.
5. Release the pressure and raise the saddle and hook.
6. Ensure that all surfaces of the castings are free from debris.

7. Place replacement disc on to Eye Clamp, ensuring that location holes align with casting lugs.
8. Close press to where it is almost touching the new disc. Visually confirm that Hook location hole is properly aligned with Eye Clamp location hole and then apply clamping force
9. Locate pin within hole and tap gently through both castings.
10. Remove clamping force.
11. Remove locating pins from jig.
12. Remove CL2 assembly from jig.
13. CL2 disc is now ready for use. Repeat procedure as necessary.

Figure 2: CL2 disc with press jig in Open position

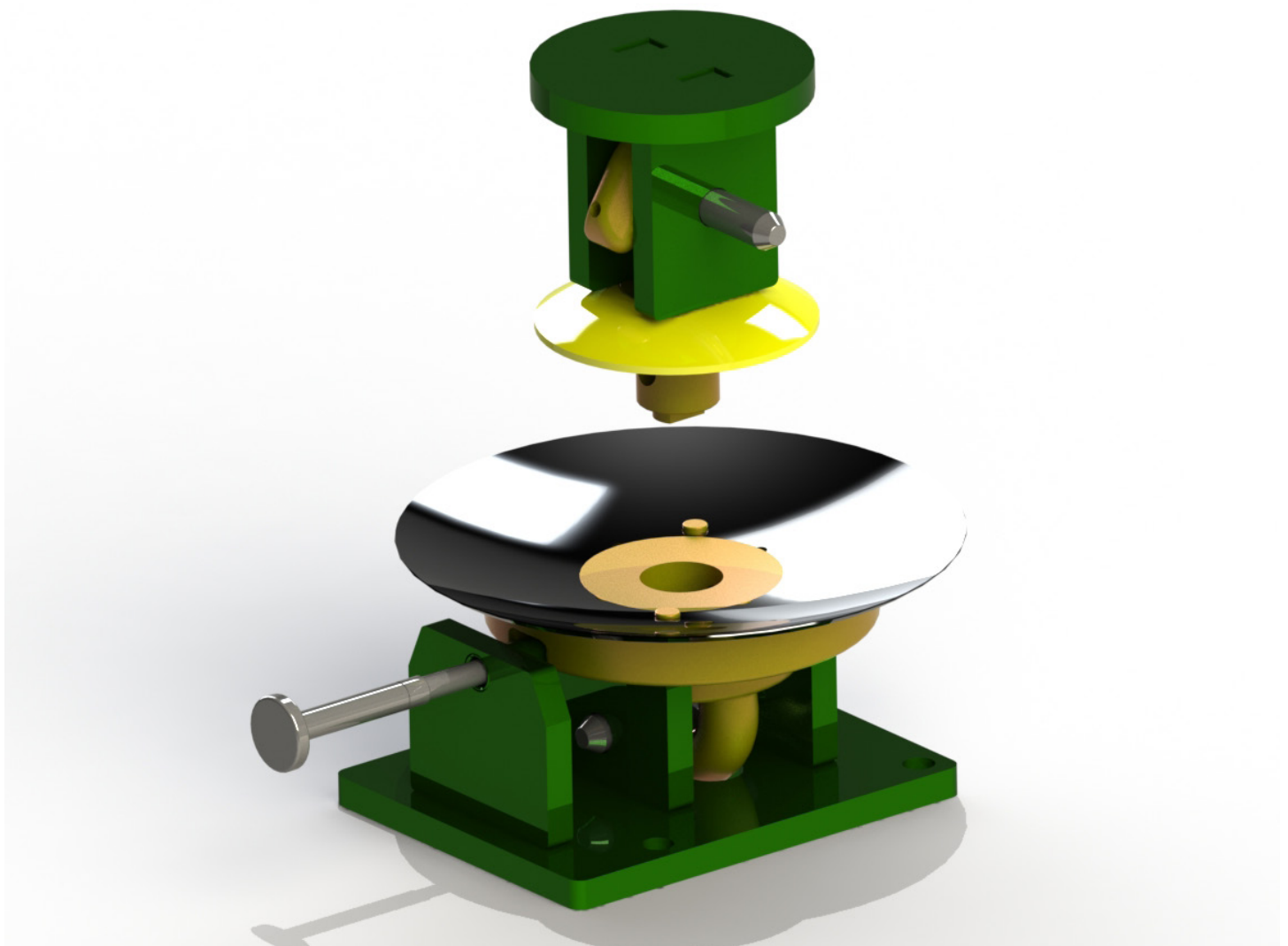
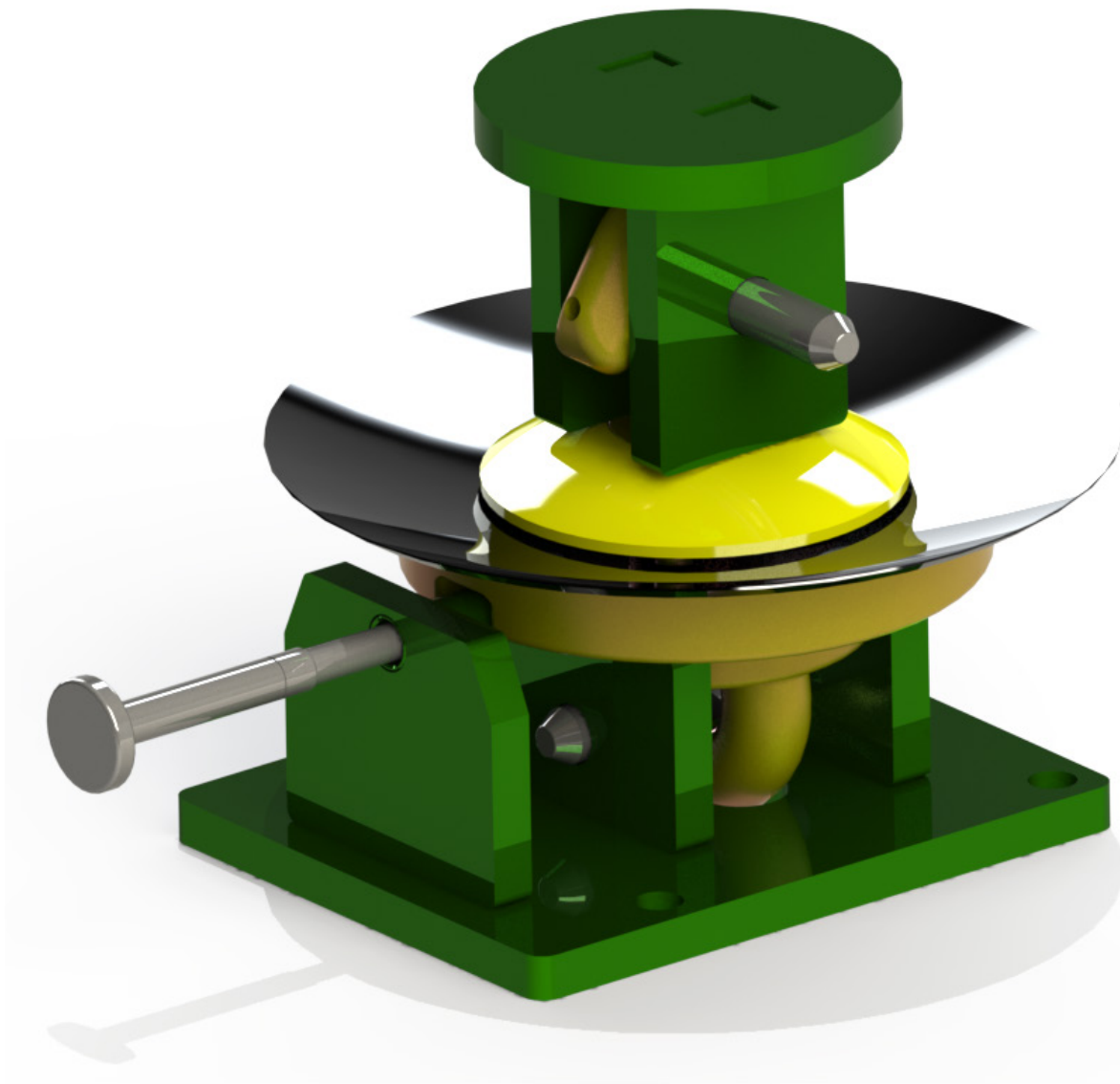


Figure 3: CL2 disc with press jig in Closed position





# Section 2

## Notes





